



# Falcon Logic

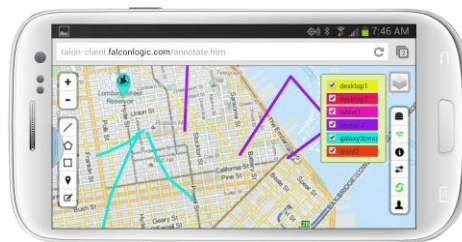
## Sector: Government Solutions

### Project: Talon



## Talon "Make Your Mark"

The cache based mobile suite that is ready to change the rules



The mobile workforce within the government is demanding capable tools. Tools that are accessible through a mobile device **without** the requirement of a constant network connection are essential.

Mobile based tools are great but if they always require an active network connection you may as well be tied to a desk.

The Talon mobile solution centers on a cache based local storage mechanism enabling remote analyst teams to collaborate and sync data when **network connections are not available**. Talon provides true multi-INT data collaboration and creation from theatre and overhead based assets for advanced end user analysis. This interoperable mapping application will change how data is created, viewed, and shared among analyst groups.

Live Demo is available at <http://talon-client.falconlogic.com>.



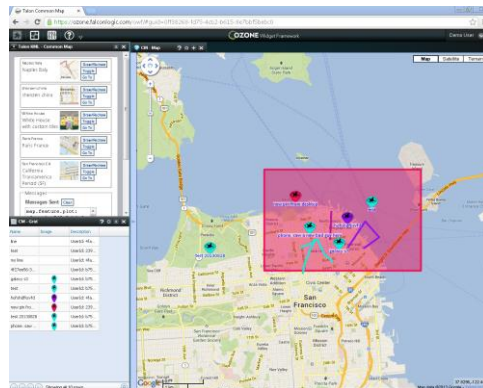
**Widgetized** – Talon Widgets are Google Map and Common Map compliant widgets. Widgets pull user's annotations from the Talon Server and render as KML.

#### Standards Based

Talon implements industry recognized KML/SOAP, and HTML5 standards as well as the Common Map API simplifying integration into multiple environments.

#### Mobile Collection is Here

Talon enables the warfighter to capture data and upload to shared analyst maps for real-time collaboration.



#### Cacheable

Users without constant network connectivity can operate their map and data they have synced in an "offline" mode. In addition they can make new Annotations and Data Layers that will be saved once reconnected, thus empowering unconnected remote response teams.



#### Data Layers

Talon provides overlays for the Common Map that can be enabled or disabled within the environment. Shareable Data Layers enable users to add new data to the layer which can then be instantly viewable by those viewing that same layered data.



#### Scalable

No in the field configuration  
No passing out of SD cards  
Admin sets up website, unlimited clients can access

#### CAPABILITY

Web, mobile, and widget based  
map applications

#### INDUSTRY

Government

#### TECHNOLOGY / SKILLS

HTML 5

.NET

jQuery

Leaflet.js

Kinetic.js

Google Maps

Common Map API

Open Street Maps

KML

GeoJSON

Ozone Widget Framework

FALCON LOGIC

Herndon, VA

877.303.2526

[www.falconlogic.com](http://www.falconlogic.com)

 **falconlogic**  
SOFTWARE THAT SOARS

Download on the  
**App Store**

